

Limit switch, spring lever with a roll (plastic end) LK\166



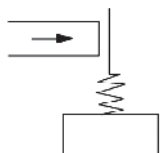
Структура на обозначаването за поръчка

LK\166

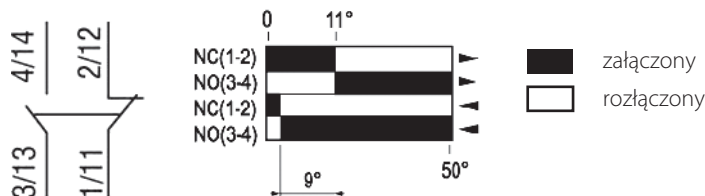
Описание на продукта

- Double circuit limit switch
- Resistant design, made of rigid plastic and aluminium cast (head and the cover make a uniform shape)
- Compact sizes, oil- and waterproof. Built-in switch with a double spring mechanism
- Longer mechanical life. Smooth action, longer service life
- Easy-to-wire circuit opening design
- Wide variety of actuators, easy use

Type of triggering



Contact operation



Technical data of triggering

| | |
|-----------------------|-----------------|
| Triggering | any moving part |
| Max. triggering speed | 1,3 m/s |
| Max. triggering force | 150 g |

Технически данни

| | |
|--|--|
| Съответствие с нормите | IEC 60947-5-1 EN 60947-5-1 UL508 CSAC22-2N° 14 IEC 60204-1 (components) EN 60204-1 (components) |
| Околна температура | -25 ... +70°C (работа) -40 ... +70°C (съхранение) |
| Устойчивост на вибрации (съгласно IEC 60068-2-6) | 55 Hz, 1.5 mm double amplitude |
| Устойчивост на удари (съгласно IEC 60068-2-27) | 30g 18 ms in any position |
| Степен на защита | IP 65, compliant with IEC60529 |
| Механична устойчивост | 15 mln (cycles) |
| Номинално изолационно напрежение U_i | 500 V, class of pollution 3, compliant with IEC 60947-1 300V, compliant with UL508, CSA C22-2n° 14 |
| Сечение на свързващите проводници | maks. 2.5 mm ² (terminals) |
| Inductive load | AC15, B300 ($U_e=240V, I_e=1,5A$) DC-13, R300 ($U_e=250V, I_e=0,1A$) |
| Resistive load | 250V, 5A |
| Честота на включване | 120 cycles/min |
| Insulation resistance | >100 M Ω , 500 V |
| Contact resistance | <25 M Ω , 5 V, 5 mA, after 10 m cycles |
| Electrical endurance | 1 m cycles, AC-15 ($U_e=240V, I_e=1,5A$) |
| Contact insulation | Za |
| Gland | rubber, max \varnothing 6...9 mm |

Размери

