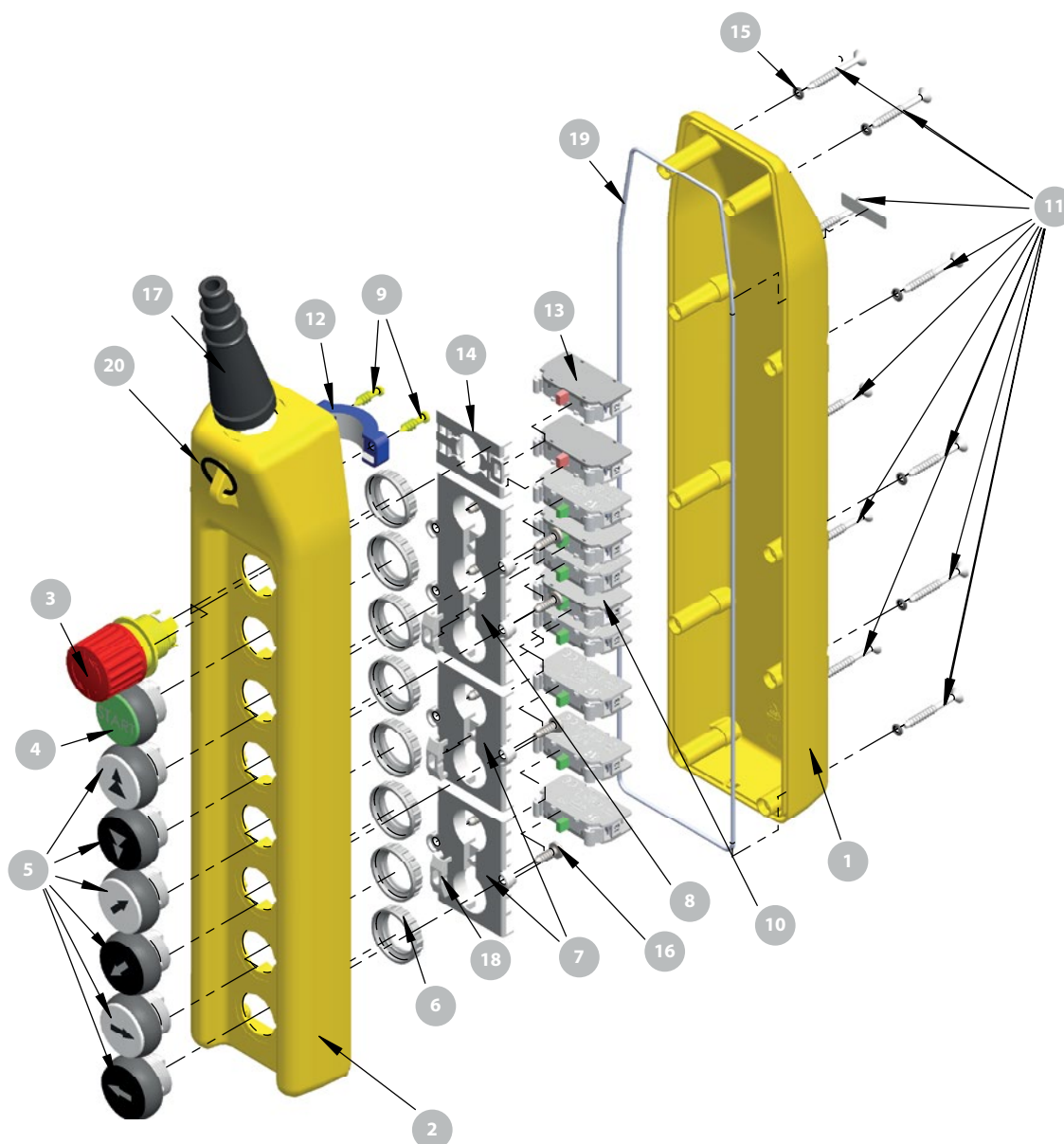


## Pendant control stations PKS-8



| Element   | Catalogue code |
|---|----------------|
| 1. Base   | PKS8-6601\P01  |
| 2. Cover  | PKS8-6602\P01  |
| 3. Actuator B   | SP22-1414\R01  |
| 4. START actuator (depending on the assembly)                           | PKS-1401\R17   |
| 5. Compact pendant control station actuator (depending on the assembly) | PKS-1401 \ _   |
| 6. Nut  | ST22-6608\P02  |
| 7. 2-hole holder  | PKS-6605\P01   |
| 8. 3-hole holder  | PKS-6606\P01   |
| 9. Screw for plastics   | 3.5x22         |

| Element  | Catalogue code |
|--|----------------|
| 10. Normally open switch (qty depends on the assembly) | SP22-10-...    |
| 11. Screw for plastics                                 | 10x45          |
| 12. Cable holder                                       | 6701-00/20     |
| 13. Normally closed switch                             | SP22-01-...    |
| 14. Holder   | SP22-6625\P01  |
| 15. O-ring   | 2.9x1.8        |
| 16. Screw for plastics 4.6x13                          | WM-2702\P02    |
| 17. 2-step gland                                       | PKS-7602\P01   |
| 18. Lock   | PKS-6601\P01   |
| 19. Silicone cord                                      | ø 2.2mm        |
| 20. Connector  | ø 24mm         |