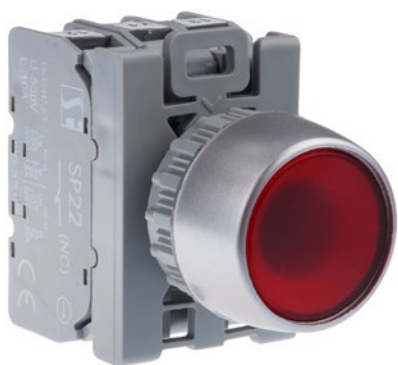


## Complete illuminated flush pushbutton KL/AKL



### Technical data

Rated insulation voltage $U_i$	500 V
Rated continuous current $I_N=I_{th}$	10 A
Rated operational current	2.5 A (230 V)
$I_e$ for AC-15	1.6 A (400/500 V)
Rated operational current	4 A (24 V)
$I_e$ for AC-13	1 A (110 V)
	0.25 A (220 V)
Switch short-circuit protection	10 A (fast fuse link)
	1 kA (prospective short circuit current for $U_e=500$ V)
Mechanical endurance	3.0 mln (transposition cycles)
Electrical endurance	0.2 mln (at rated switching voltages and currents)
	1.0 mln (switching cycles)
	- up to 10 W (for DC electromagnets)
	- up to 80 VA (for AC electromagnets)
Frequency of switching	up to 3600 h <sup>-1</sup>
Ambient temperature	-40 ... +70°C (work)
	-40 ... +70°C (storage)
Vibration test (acc. to IEC 60068-2-6)	2...13, 2...100 Hz (frequency)
	± 1 mm (amplitude)
	±0.7 g (acceleration)
Shock test (acc. to IEC 60068-2-27)	15 g (peak acceleration)
	11 ms (impulse duration)
Damp heat cyclic test (acc. to IEC 60068-2-30)	55°C (ambient temperature)
	95% (relative humidity)
Salt mist cyclic test (acc. to IEC 60068-2-52)	severity 1
Protection level (Publ. IEC529) of pushbutton actuators after mounting in panel opening	IP65
Wire gauge	2× 1...2.5 mm <sup>2</sup> (solid)
	0.75...1.5 mm <sup>2</sup> (stranded)
Working position	any
Terminal marking	PN-EN 50013
Lamp power rating	1 W (LED 24/230 V)
	2 W (bulb 24/230 V)
	1.6 W (LED UNI 24-230 V AC and 24-110 V DC)
Lamp rated voltage	24 ... 230 V
	24,230 V AC and 24, 220 V DC
Compliance with the standard	PN-EN 60947-5-1
	IEC 60947-5-1
	IEC 60947-1

### Accessories

Hermetic cap ST22-7606 (IP67)
Insert plate for illuminated flush actuators ST22-7202
Legend plate ST22-1901 for momentary pushbuttons

### Ordering code

SP22- [ ] - [ ] - [ ]

									Inserts
									Bez wkładki
									-1 O
									-2
									-3 "STOP"
									-4 "START"
									-5 "OFF"
									-6 "ON"
									Light sources
									24-BA9S
									230-BA9S
									24-LED AC/DC
									220-LED-DC
									230-LED-AC
									LED-UNI
									Switches
									10, 20, 30, 40
									01, 02, 03, 04
									11, 12, 13
									21, 22
									31
									Colour
									C ● red
									G ● yellow
									Z ● green
									N ● blue
									B ○ white
									Pushbutton type
									KL momentary
									AKL maintained

Description: the first digit represents the number of normally open circuits, the second digit represents the number of normally closed circuits.

### Components

#### Pushbutton actuators

Illuminated flush pushbutton actuator KL/AKL

#### Lighting elements

Lamp holders for light sources SP22

Light sources SP22

#### Holders

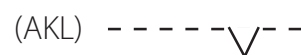
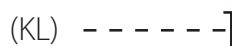
Holder SP22-6625

#### Switches

Switches SP22 rail-mounted

Standard switches SP22

### Diagrams



## Dimensions

