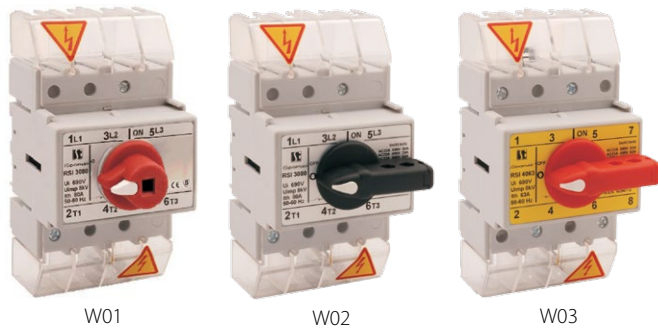


Isolating switch disconnecter RSI 80



W01

W02

W03

Technical data (continuous work)

Rated insulation voltage U_i	690 V
Rated withstand impulse voltage U_{imp}	8 kV
Conventional rated thermal current in the air I_{th}	80 A
Rated operational current I_e for AC-21A, AC-22A	80 A (690 V)
Rated operational current I_e for AC-23A	70 A (400 V) 55 A (500 V) 32 A (690 V)
Rated power AC-23A for 3-phase standard asynchronous motors	35 kW (400 V) 35 kW (500 V) 30 kW (690 V)
Rated operational current I_e for DC-21A	80 A (220 V)
Rated operational current I_e for DC-22A	50 A (220 V)
Rated operational current I_e for DC-23A	40 A (220 V)
Short-time short-circuit withstand current $I_{cw}(1s)$	1.8 kA
Rated short-circuit making current I_{cm}	6 kA
Rated conventional short-circuit current	15 kA (fuse link gL/gG 80 A)
Mechanical endurance	10000 (cycles)
Electrical endurance	1500 (cycles)
Wire gauge	10...25 mm ² (solid)
Weight	0.3...0.32 kg
Vibration test (acc. to IEC 60068-2-6)	2...100 Hz (frequency) ± 1 mm (amplitude) ±0.7 g (acceleration)
Shock test (acc. to IEC 60068-2-27)	15 g (peak acceleration) 11 ms (impulse duration)
Damp heat cyclic test (acc. to IEC 60068-2-30)	55°C (ambient temperature) 95% (relative humidity)
Salt mist cyclic test (acc. to IEC 60068-2-52)	severity 1

Ordering code

RSI- \

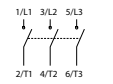
Disconnecter knob

- W01** for external knob
- W02** with knob on black disconnecter
- W03** with knob on red disconnecter

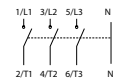
Disconnecter poles

- 3080** 3 poles
- 3080N** 3 poles + N non-switched
- 4080** 4 poles
- 4080N** 3 bieguny + N rozłączny
- 6080** 6 poles
- 6080N** 6 poles + 2xN non-switched
- 8080** 8 poles

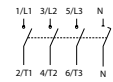
Disconnecter poles



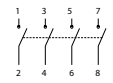
3 poles



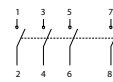
3 poles + N non-switched



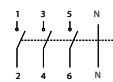
3 poles + N switched



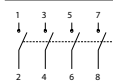
4 poles



6 poles



6 poles + 2xN non-switched



8 poles

Accessories

Auxiliary contact SP80

Knob PR 30

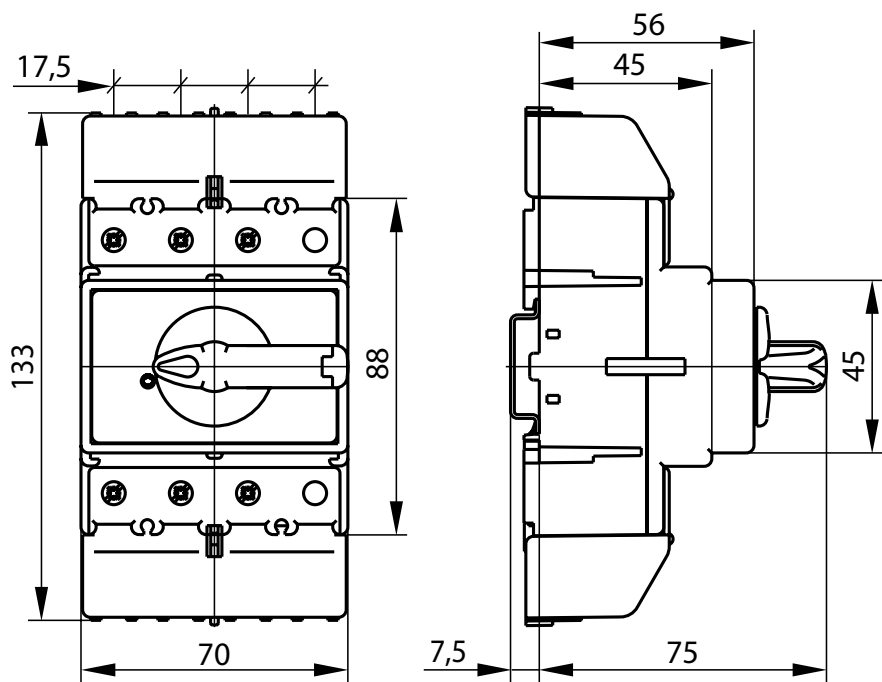
Shaft with a lock RSI 160-1919

Mounted behind the board, RSI 80-1203 for assembly W01

Shaft clamps for RSI, PRZK RSI160-6621\P01

Dimensions

Dimensions of 3 and 4-pole



Dimensions of 6 and 8-pole

