

Switch socket ZI with disconnector 0-I



IP44

IP67

Ordering code

ZI

Assembly number of the switch socket

02\R111, 12\R111, 02\R211, 12\R211
 02\R571, 12\R571, 03\R111, 03\R211
 03\R581, 04\R111, 04\R211, 04\R511
 02\R341, 12\R341, 02\R441, 12\R441
 05\R341, 05\R342, 05\R441, 05\R442

Protection level **IP67** in assemblies: ZI12\R111, ZI12\R211, ZI12\R571, ZI12\R341, ZI12\R441.

In assemblies: ZI05\R341, ZI05\R342, ZI05\R441, ZI05\R442 the side socket is protected with a fuse-link WTA 10A/250V 1500 A AC.

Assemblies ZI01 are fitted with a rubber gland, other assemblies: metric gland

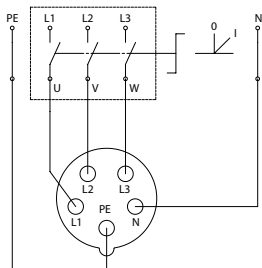
Technical data

Rated insulation voltage U_i	500 V
Prąd znamionowy zestawu I_{nA}	max 32 A
Rated frequency	50-60 Hz
Rated switching voltage U_e	230/400 V
Rated withstand impulse voltage U_{imp}	6 kV
Wire gauge	2.5...4 mm ²
Degree of protection	IP44; IP67
Protection class	II
Gland type	M25x1.5

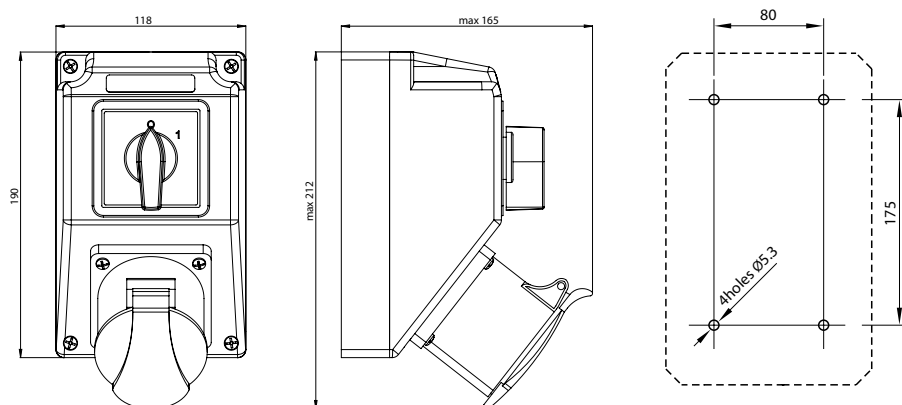
Product description

Switch sockets ZI with disconnectors 0-I in a housing with protection level IP44 or IP67 are fitted with 1, 2, or 3 fixed sockets. There is a variety of configurations regarding the type and current rating of sockets. Switch sockets ZI with main socket 16A are fitted with a cam switch ŁK16R in function of a disconnector 0-I. Units with main socket 32A are fitted with a cam switch ŁK32R. Switch sockets ZI are compliant with the standard: PN-EN 60439-3, PN-EN 60439-1.

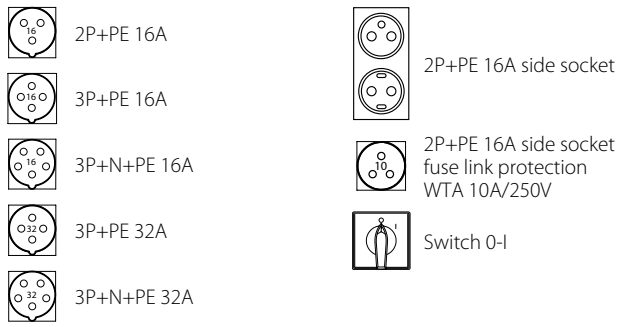
Electrical diagram



Dimensions

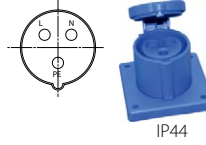


Elements of the assemblies



Pin layout of the sockets

2P+PE 16 A, 230V



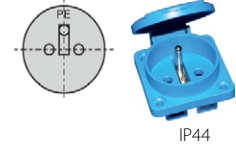
3P+PE 16 A 400V, 32 A 400V



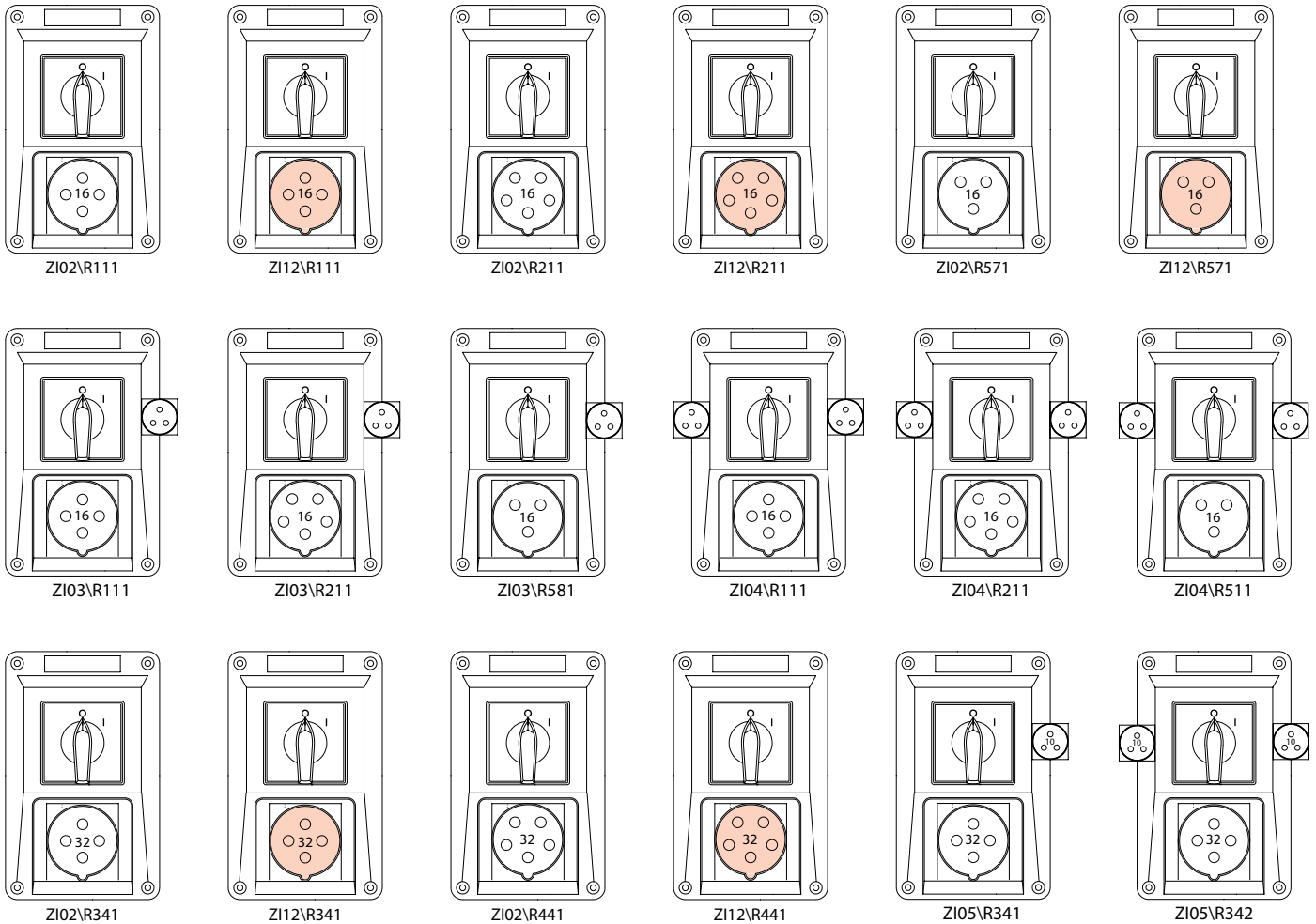
3P+N+PE 16 A 400V, 32 A 400V

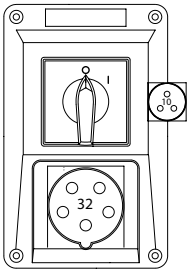


2P+PE 16 A 230V side socket

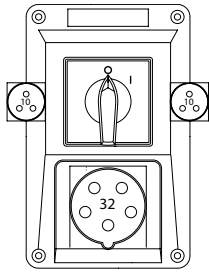


Assemblies





ZI05\R441



ZI05\R442